



"Your monitoring specialist"  
certified ISO 9001 + ISO 14001

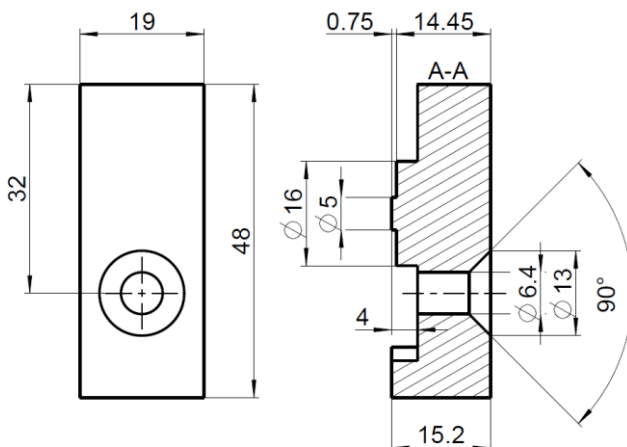
## Crimping Line

# Piezo Force Sensor PSS50

Piezoelectric sensor for measuring the longitudinal strain of the crimp machine frame. The piezo force strain sensor converts the strain of the crimp press frame into a measurable and highly accurate force signal. Piezoelectric frame sensors are mounted directly on the press frame and are ideal for quality monitoring during the crimping process in combination with a crimp force monitor.

### Performance features

- ⊗ Rugged and solid construction
- ⊗ Exceptional stability and repeatability
- ⊗ Wide linear dynamic measurement range
- ⊗ BNC connection
- ⊗ Sensitivity 50mV/ $\mu\epsilon$
- ⊗ Inclusive connection cable SC-40



All dimensions in mm



**"Your monitoring specialist"**

certified ISO 9001 + ISO 14001



## Crimping Line



Quality Management  
Environmental Management

ISO 9001  
ISO 14001  
[www.dekra-seal.com](http://www.dekra-seal.com)

C-tec Cable technologies GmbH & Co.KG  
Ilztalstrasse 11  
D-94513 Schönberg  
Tel.: +49 (0) 8554 – 94 23 9-0  
Fax: +49 (0) 8554 – 94 23 9-20

eMail: [info@cable-tec.net](mailto:info@cable-tec.net)  
HP: [www.cable-tec.net](http://www.cable-tec.net)